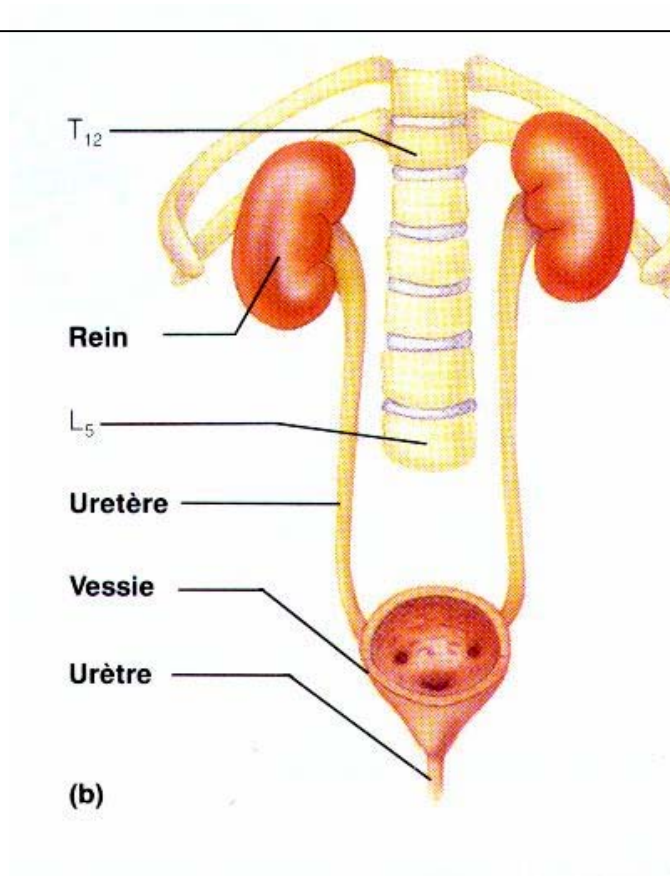
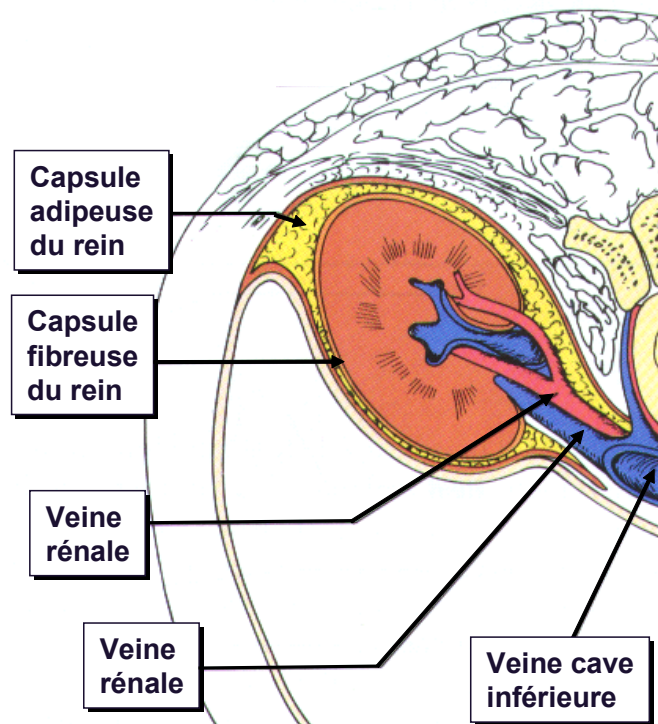


**PREMIERE PARTIE : LE SYSTEME URINAIRE**



*Figure 1 – Anatomie générale du système urinaire*



*Figure 2 – Coupe transversale d'un rein*

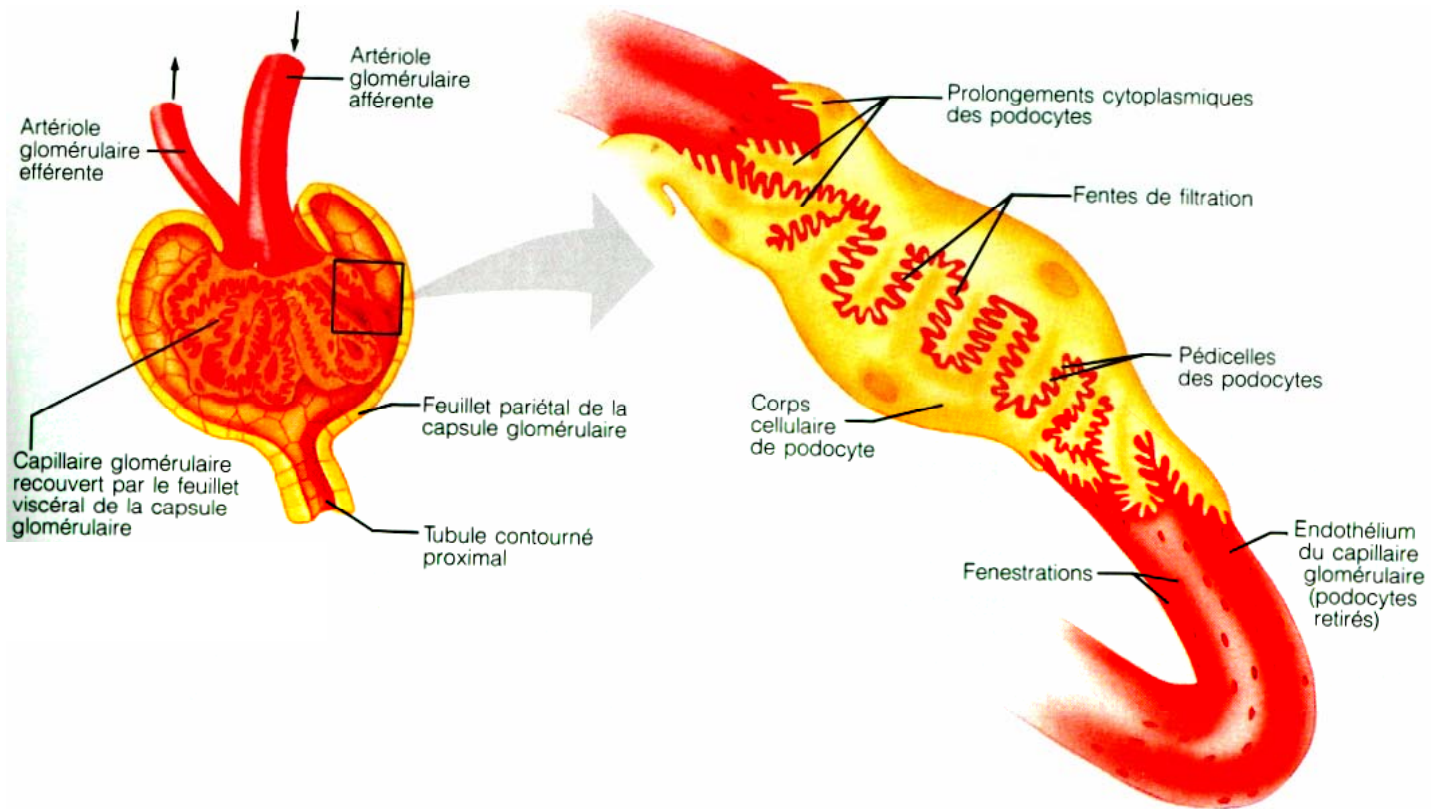


Figure 9 – Schéma d'un glomérule et d'un podocyte

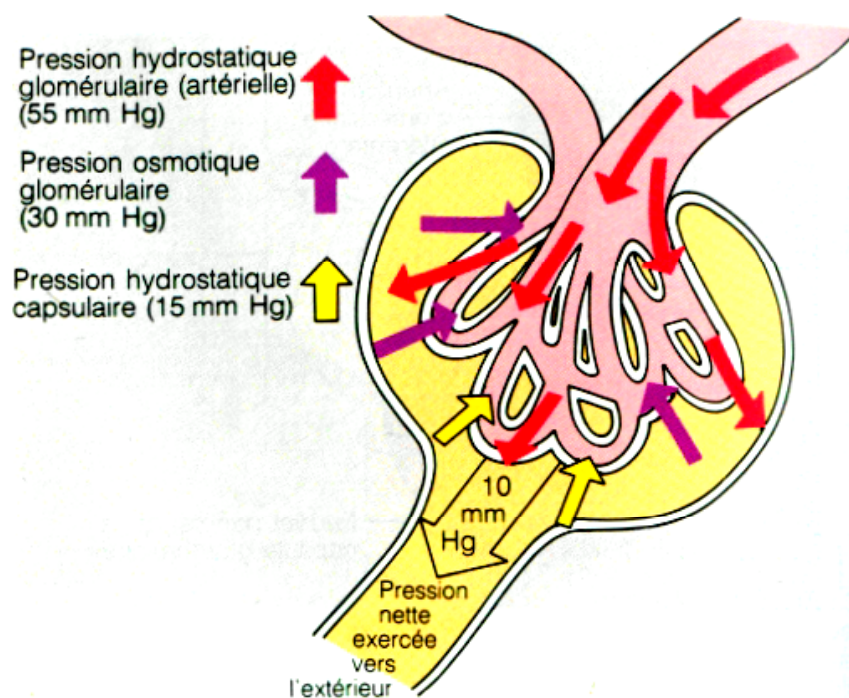


Figure 10 – Pressions glomérulaires

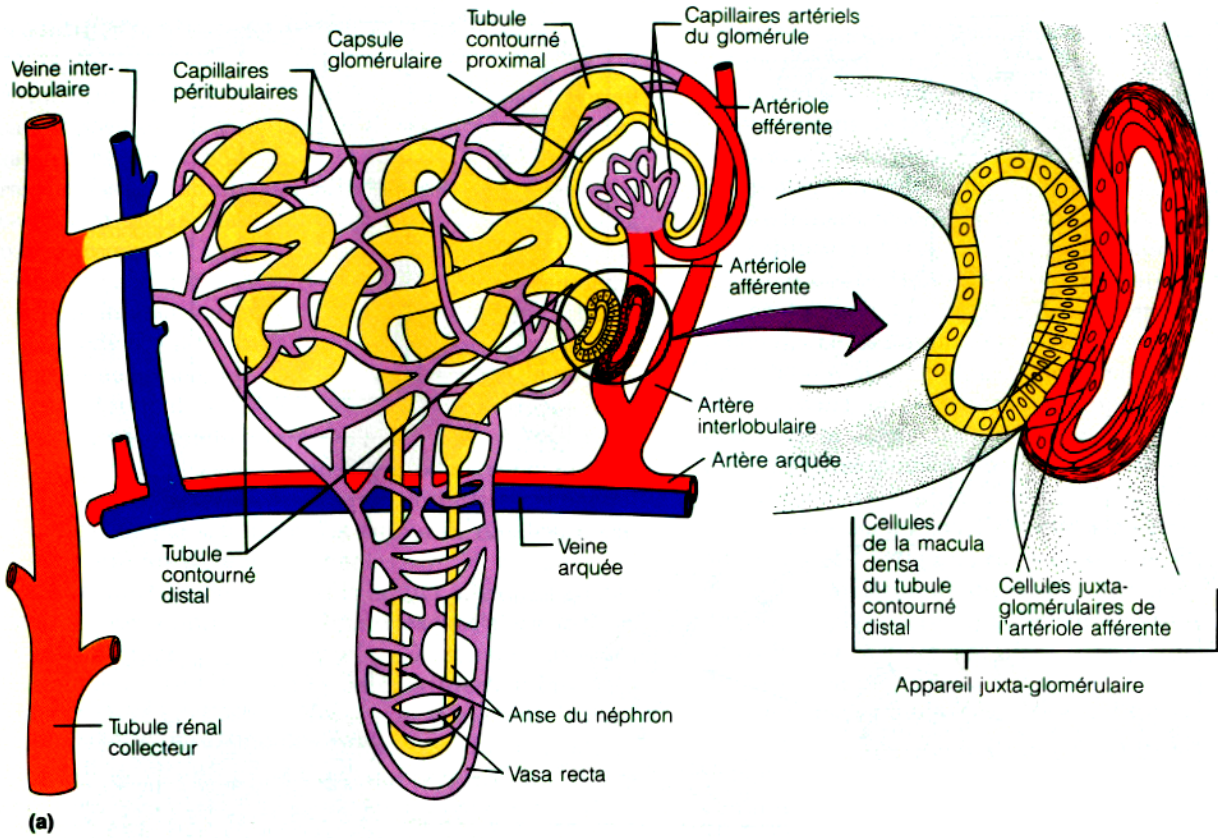


Figure 7 – Schéma de l'appareil juxta-glomérulaire

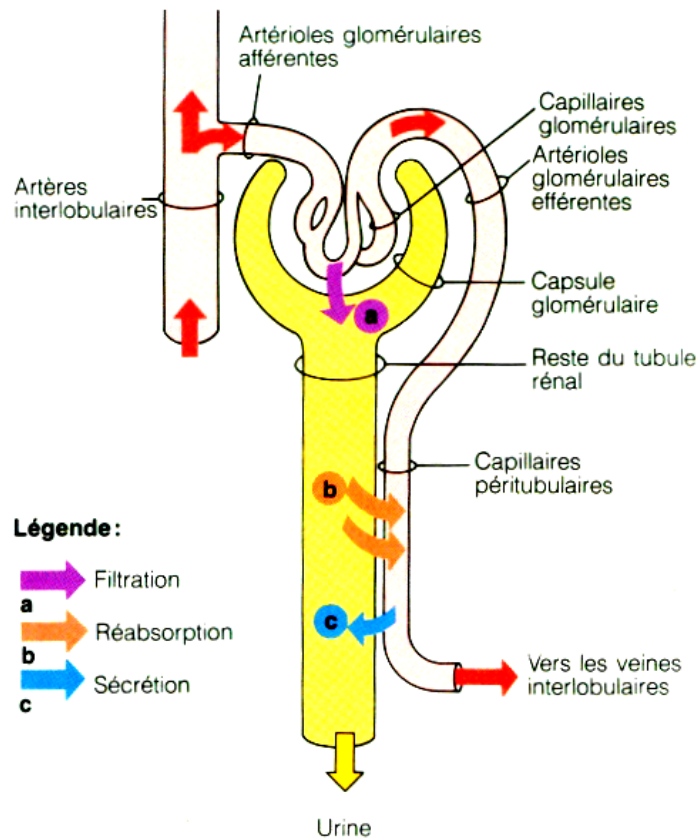


Figure 8 – Schéma du principe de fonctionnement des reins

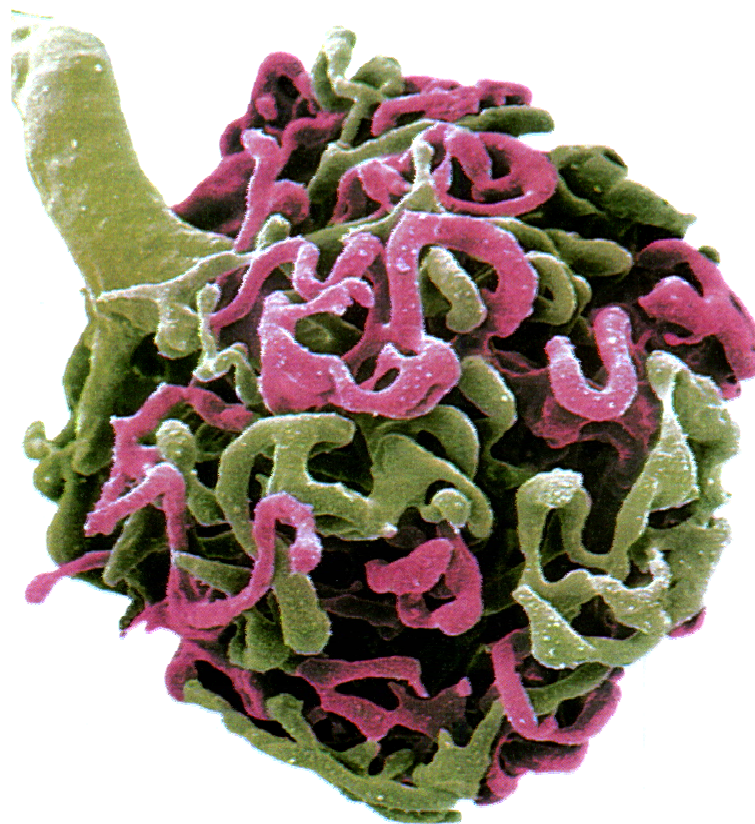
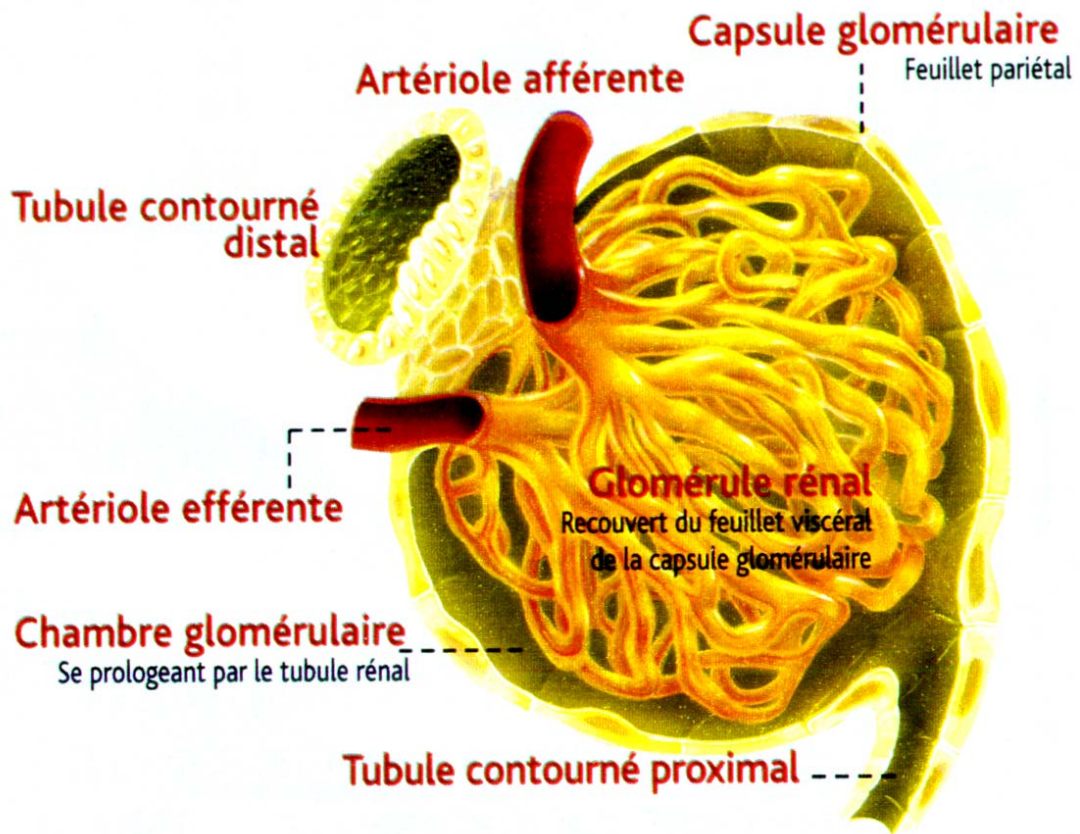


Figure 6 – Schéma d'un glomérule

